



texponto.

Apparel Solutions for Creative People

Product Blueprint

The Cheat Sheet of Everything

Spoilers ahead

- 3** Why Texponto
- 5** How It Works
- 7** Pre Developed Products
- 10** Fabrics, Ribs & Stitching
- 15** Dyeing Processes
- 20** Customisation Techniques
- 28** Design File Requirements
- 30** Labels & Tagging
- 32** Packaging
- 34** Order Process

Why Texponto

Based in Portugal, Texponto designs and manufactures high-quality garments with a strong focus on customisation, sustainability, and contemporary style.

Whether you're building a clothing brand, launching a collection, or simply looking for high-quality garments, we offer a flexible range of products ready to adapt to your vision. Our mission is to make custom textile production more accessible, transparent and reliable while ensuring consistent quality from the very first sample to large-scale production.

This guide will walk you through our core products, technical specifications, and customization options. If you have any questions along the way, our team is ready to assist you.

You can reach us at : sales@texponto.com

How It Works

All TEXTPONTO products are available either blank or to be customised, depending on your needs.

Blank Orders

You can purchase a selection of our products directly from stock, with **no minimums** or customization required. Perfect for immediate use or testing the fit and fabric.

Custom Orders

For customised production, we offer full customization using screen printing, embroidery, dtg or dtf. These orders follow a **minimum of 50 units** per model and colour.

Samples

If you'd like to test quality or print options first, samples are available upon request.

Production & Delivery

Once your order is confirmed, our team handles everything from artwork validation to production and final delivery — always with quality and consistency in mind.

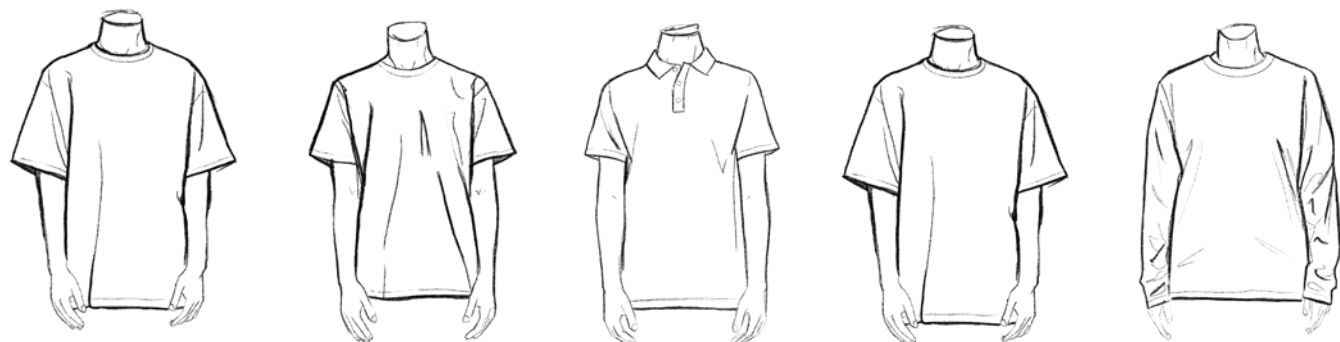
Pre Developed Products

Our catalogue includes a carefully curated selection of timeless fits, ready to be worn as-is or to fully customize. We prioritise durability, comfort and clean design — ideal for printing, embroidery or private label projects.

Explore each category to find the best fit for your brand.

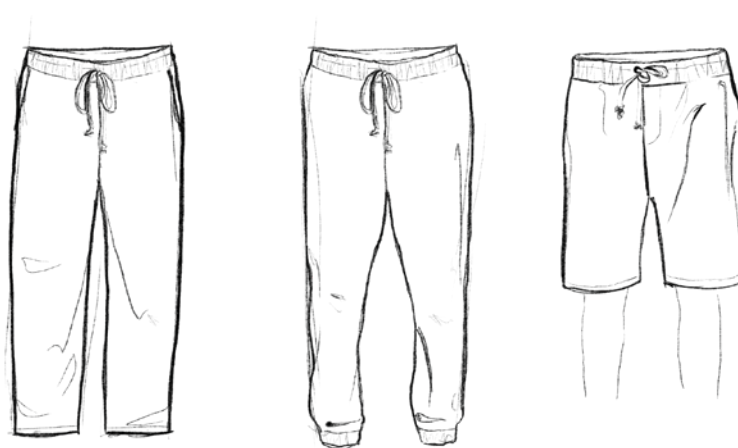
Casual Collection

- ⊗ T-Shirts & Tops;
- ⊗ Sweats & Hoodies;
- ⊗ Joggers & Shorts;
- ⊗ Accessories – Essentials.



Marinière Collection

- ⚓ Adult Garments;
- ⚓ Children's & Baby;
- ⚓ Accessories – Marinière.



Fabrics, Ribs & Stitching

At Texponto, we believe that **quality is in the details.**

Every garment is developed with carefully selected materials, reliable finishing techniques, and stitching methods that ensure durability and visual consistency even after repeated wear and wash. Our fabrics are knitted and finished in Portugal, using mostly natural and organic fibres. From lightweight single jersey to structured fleece and French terry, each knit is chosen for its specific performance in printing, embroidery and daily use. Reinforced ribs, flat seams and stable necklines are part of our standard - not an upgrade.

This commitment to quality allows our clients to create collections that not only look good but last longer.

Main Jersey Knits

1 Single Jersey 180 g/m² 100% Cotton

- ✓ Lightweight and breathable,
- ✓ Ideal for summer t-shirts, tanks and crop tops



2 Double Jersey 230 g/m² 100% Cotton

- ✓ Denser and more structured,
- ✓ Ideal for oversized t-shirts



3 Interlock 220 g/m² 100% Cotton

- ✓ Ideal for close-fitting pieces



4 French Terry 330 or 420 g/m² 100% Cotton

- ✓ A loopback knit fabric for a premium feel.
- ✓ Ideal for sweatshirts, hoodies, joggers and shorts.



5 Fleece 330 or 420 g/m² 100% Cotton

- ✓ Brushed cotton fleece for a more cozy and warm feel.
- ✓ Ideal for heavier hoodies and sweats.



Ribs & Finishes

1 Ribbed Necklines

- ✓ 1x1 rib depending on the garment
- ✓ Reinforced with lycra for long-term shape retention
- ✓ Double-needle topstitch for stability

2 Cuffs & Waistbands

- ✓ 2x2 used in hoodies, joggers and sweats
- ✓ Made from matching or contrast rib with elastane
- ✓ Soft stretch and recovery, wash after wash

3 Taping & Reinforcements

- ✓ Shoulder-to-shoulder taping in all t-shirts
- ✓ Extra coverstitch on high-stress zones (neck, cuffs, waistband)
- ✓ Flatlock or overlock seams depending on model



Stitching Techniques

Lock Stich (Single Needle)

Is the method involved with utilizing a solitary needle to make a lockstitch.

Cover Stitch (Double Needle)

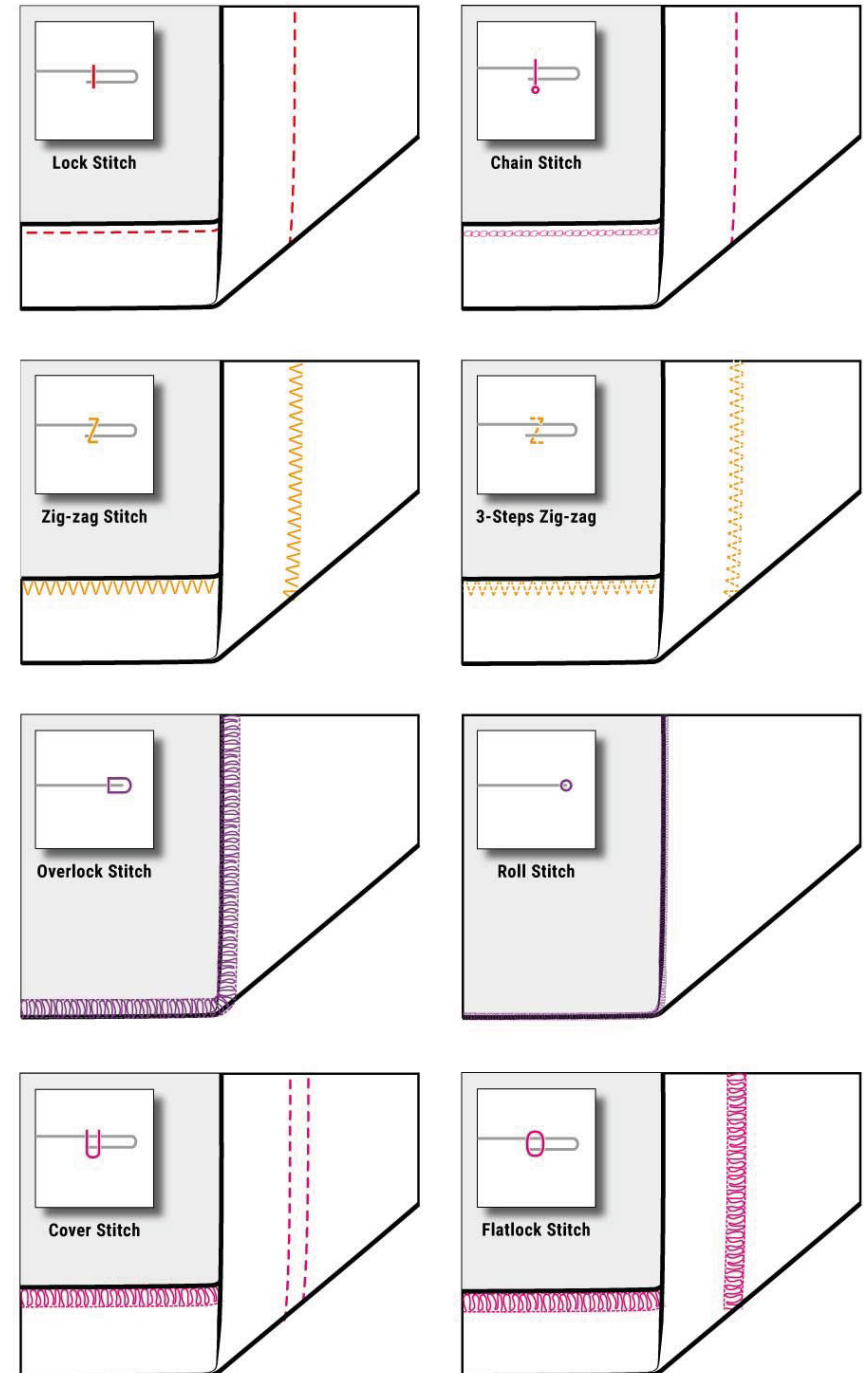
Creates a stretchy, professional-looking hem with parallel rows of straight stitches on one side and a zigzag stitch on the other,

Overlock

A specialized sewing technique and stitch that finishes the edge of fabric by sewing a loop over the raw edge, often with a knife that trims the fabric as it sews.

Flatlock

A sewing stitch that creates a flat, low-profile seam by butting two raw fabric edges together and encasing them in a flexible, decorative thread.



Dyeing Processes

At Texponto, we offer **different dyeing processes** to match the creative direction of your brand. Whether you're looking for timeless, clean colourways or unique finishes with a worn-in look, all our garments are dyed and finished in Portugal under our strict quality control.

Our colour development process ensures consistency across production runs, and our team is available to guide you in choosing the method that best suits your project.

Custom Colour Dyeing

Reactive dye

Looking for a specific colour? We offer custom dyeing based on the Pantone® Fashion, Home + Interiors (FHI) system.

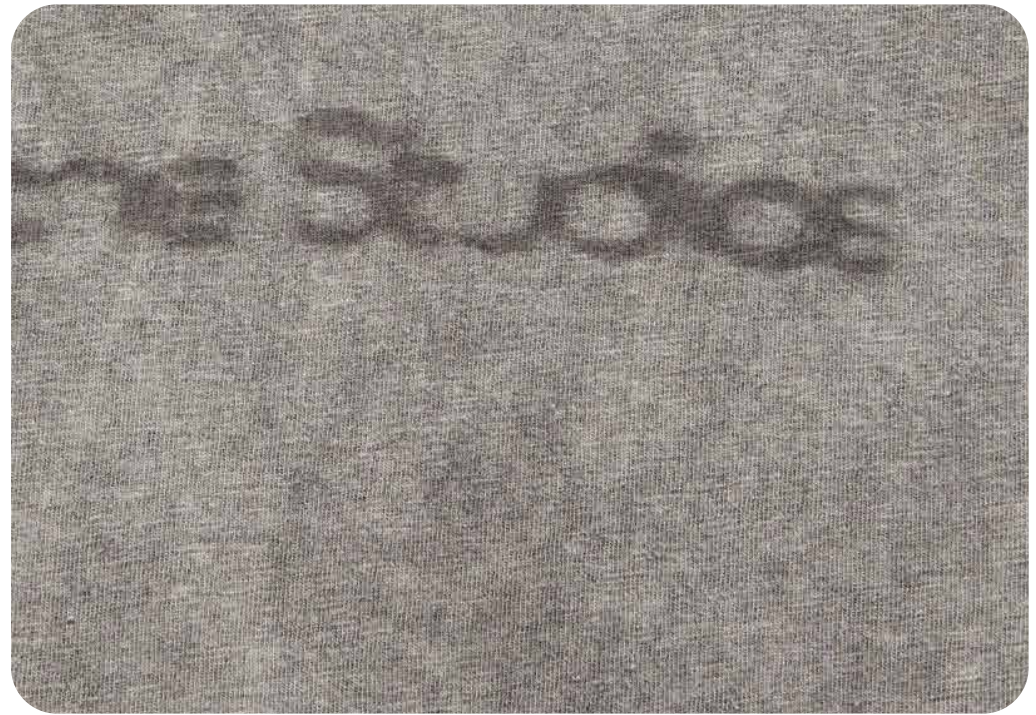
- ✓ Provide us with a Pantone TCX code
- ✓ MOQ and lead time apply (typically from 50–300 units per colour, depending on the fabric)
- ✓ Colour lab dips available for approval prior to production



Fade Out Dye

For a washed, vintage feel, we offer fade out dyeing. The final result brings tonal variation, softening, and a unique finish to each piece.

- ✓ Pre-washed for extra softness
- ✓ Slight shade variation between units — part of the aesthetic
- ✓ Recommended for streetwear and casual collections



Optional Add-ons (for custom projects)

- ✓ Enzyme washing for extra softness
- ✓ Pre-wash for shrinking control
- ✓ Acid wash
- ✓ Other techniques upon request



Customisation Techniques

All Texponto garments are designed to be fully customisable.

From bold silkscreen prints to premium embroideries, we offer a curated selection of customization methods carried out to guarantee precision, durability and brand consistency.

Our team is available to advise on the best technique based on your design, fabric, and production goals.

Screen Printing

Ideal for bold, flat-colour designs and high durability.

Standard Screen Print

- ✓ Best suited for medium to large runs
- ✓ Strong wash resistance
- ✓ Works well on all jersey and fleece bases, except joggers and shorts
- ✓ Max. 5 colours per design (spot colours)

Puff Print

- ✓ 3D effect with a raised, soft texture
- ✓ Adds volume and visual interest
- ✓ Great for minimal or oversized designs

Plastisol Print

- ✓ Strong colour vibrancy
- ✓ Slightly rubbery touch
- ✓ Suitable for darker garments and high-opacity finishes

Metallic inks, cracking effects, vintage soft-hand finishes, and more — subject to technical approval.

Recommended for logos, slogans and bold artwork with clear colour separation.



Embroidery

A premium option with a tactile, long-lasting finish.

Standard Embroidery

- ✓ Suitable for logos, monograms, icons
- ✓ Ideal for heavy fabrics (hoodies, sweats, polos, etc.)
- ✓ Can be applied on chest, sleeves (some exceptions apply), accessories
- ✓ Up to 8 thread colours per design
- ✓ 2mm minimum thickness for designs to be able to be embroidered

Puff Embroidery

- ✓ Raised, 3D texture created with a foam base
- ✓ Bold and sculptural — adds dimension
- ✓ Especially impactful on hats, hoodies, and chest logos

Adds dimension and perceived value — especially for limited editions or high-end drops. Maximum dimension is 25 cm on the biggest side.



Embroidery

A high-end solution for lasting, tactile branding — offering depth, texture and strong visual identity. All embroidery is executed with precision and durability in mind, using high-quality threads and industrial-grade machines.

Chenille Embroidery

- ✓ Loop-style embroidery with a soft, wool-like feel
- ✓ Retro or varsity-style aesthetic
- ✓ Works best for large areas (e.g. initials, patches)

Patch Embroidery

- ✓ Embroidered graphics applied as sewn-on or heat-pressed patches
- ✓ Flexible positioning
- ✓ Easy to reproduce in repeat collections
- ✓ Can include merrowed or laser-cut edges



Transfer Techniques

Transfers are heat-applied prints with exceptional versatility — perfect for detailed, multicolour or textured designs.

DTF Transfer (Direct to Film)

- ✓ No colour limitations (CMYK)
- ✓ Smooth finish with moderate stretch
- ✓ Works well on all fabrics
- ✓ Ideal for photographic or gradient-rich artwork

High Density Transfer

- ✓ Raised, rubbery texture with precise edges
- ✓ Adds dimension and a premium tactile effect
- ✓ Great for logos, small icons or discreet branding

Transfers are ideal for detailed designs, low-volume runs or when you need full-colour results across a range of garment types.



Transfer Techniques

Flock Transfer

- ✓ Soft, velvety surface
- ✓ Bold colour payoff with a unique textile touch
- ✓ Ideal for retro designs or winter collections

Special Transfers (on request)

We offer a wide range of advanced transfer options via partners: metallic, reflective, glitter, silicone base, glow-in-the-dark, cracked texture, and more.

- ✓ MOQ and technical feasibility apply
- ✓ Available under consultation



DTG (Direct to Garment)

Direct-to-Garment (DTG) printing delivers high-quality, full-colour prints directly onto garments with a soft, natural feel. Perfect for vibrant designs, gradients, or artwork that demands precision and flexibility.

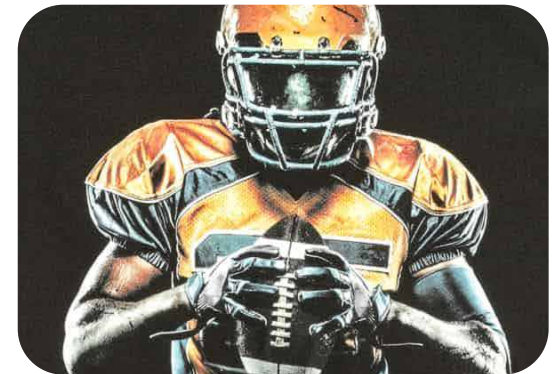
DTG Max Technology

- ✓ Unlimited colour range, from bold solids to smooth gradients
- ✓ Photographic detail with sharp definition and true-to-life vibrancy
- ✓ Soft, breathable hand-feel - the ink bonds seamlessly with fabric
- ✓ Works across cotton, blends and poly-rich garments
- ✓ Ideal for fashion collections, retail-quality merchandise, and quick-turn runs

XDi Technology

- ✓ Creates raised, 3D effects that mimic embroidery, high density, vinyl or screen textures
- ✓ Adds depth and tactile impact without stitching or layering
- ✓ Perfect for logos, monograms, and premium branding accents
- ✓ Flexible finish - durable, stretchable, and comfortable to wear

DTG with MAX and XDi offers the best of both worlds: full-colour, soft-touch prints plus the option for high-impact dimensional effects - all in one process, across a wide range of garment types.



Design File Requirements

Design File Requirements

To ensure your designs are reproduced with maximum precision and quality, we require production-ready files that meet specific technical standards. Our team is happy to guide you through this if needed.

Accepted File Formats

- ✓ Vector files: .AI, .PDF, .SVG
- ✓ High-resolution raster files: .PNG or .TIFF at 300 dpi
- ✓ Texts must be converted to outlines (no editable fonts)
- ✓ All artwork must be true to size and properly placed

Colour Specifications

- ✓ Pantone® TCX codes for textile colour matching
- ✓ For screen printing, please provide a maximum of 5 spot colours
- ✓ For transfers or digital printing, CMYK or RGB profiles are accepted

Print Positioning

- ✓ Clear mock-ups or placement guides are required (front, back, sleeve, etc.)
- ✓ If multiple placements exist, each must be provided as a separate file

Incorrect or incomplete files may delay production. File adjustments may incur additional costs, please see our Design Services page.

Labels & Tagging

Labels & Tagging

We offer several label options to help you reinforce your brand's identity, all produced in Portugal and sewn or applied during finishing.

Main Label Types

- ✓ Neck label (woven or printed): standard or custom shape
- ✓ Hem label (usually sewn onto arm sleeve or bottom hem)
- ✓ Sleeve label (optional; adds subtle branding)
- ✓ Special labels can also be placed on other locations (on request)
- ✓ Flag Label (usually sewn onto side seam)

You can choose between folded woven labels, satin printed labels, or heat-transfer prints for a tagless option

Care & Composition Labels

- ✓ All garments are supplied with compliant care labels
- ✓ Labels include fibre composition, washing instructions, and country of origin
- ✓ Custom care labels can be created in your preferred layout and language(s)

Label placement, layout and sewing method must be confirmed before production.



Packaging

Packaging

Whether you're shipping directly to a warehouse or preparing for retail, we offer functional and branded packaging options to match your needs.

Standard Options

- ✓ Transparent polybags (with or without size stickers; individual sticker with model details)
- ✓ Individual sleeves (kraft paper)
- ✓ Custom cardboard boxes (for premium or gift-ready presentation)

Optional Add-ons

- ✓ Branded stickers or tape
- ✓ Custom hang tags with string
- ✓ Barcode application
- ✓ Care card or thank-you card insert

Packaging preferences must be approved before production. MOQ and additional lead time may apply for custom solutions.



Order Process

Order Process

Whether you are placing your first order or restocking an existing design, our process is designed to be clear, collaborative and efficient — with full transparency from start to finish.

Initial Request

- ✓ Selected models and colours
- ✓ Quantities (No MOQ on blank garments / Minimum 50 units per model & colour on customized)
- ✓ Type of customisation (if any)
- ✓ Design files and Pantone references
- ✓ Requested packaging & labelling options

Quotation & Technical Review

- ✓ Pricing based on quantity, customisation and packaging
- ✓ Technical feasibility review (e.g. print scale, embroidery size)
- ✓ Estimated delivery time

Sampling (if needed)

- ✓ Sample cost: 100€ (excl. customisation, accessories and shipping)
- ✓ Lead time: 25 working days
- ✓ Sample feedback is used to validate production specs

Order Confirmation

- ✓ A pro forma invoice is issued
- ✓ Production starts after confirmation of payment and artwork
- ✓ Lead time: usually 3 to 5 working weeks depending on complexity

Production & Quality Control

- ✓ All garments are produced, finished and inspected in-house
- ✓ Each order is subject to internal quality control before shipping

Delivery

- ✓ Orders are shipped from our facilities in Portugal
- ✓ International shipping available
- ✓ Tracking and delivery details are provided upon dispatch